



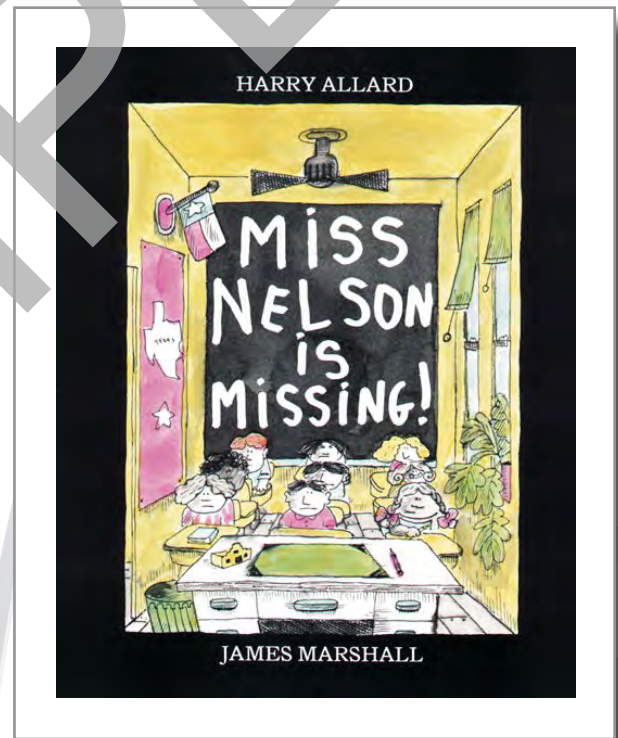
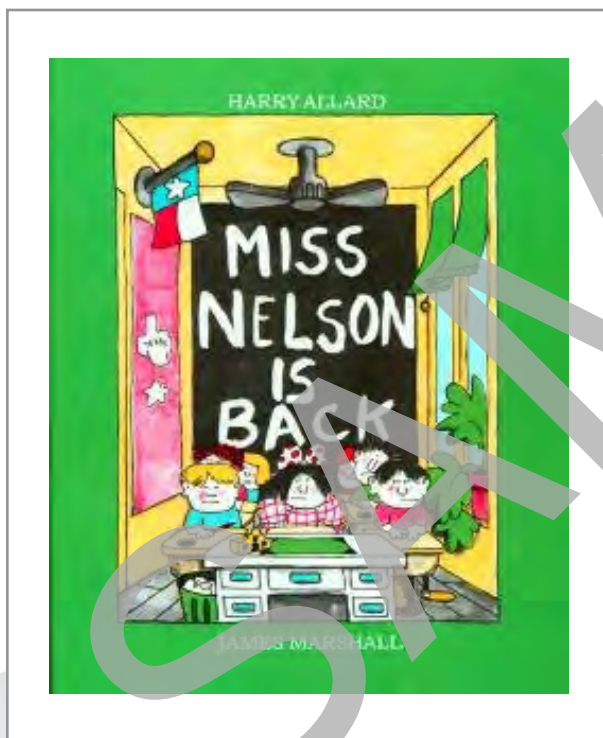
COMPREHENSIVE CURRICULUM BASED LESSON PLANS

Miss Nelson Is Back

Harry Allard

Miss Nelson Is Missing

Harry Allard



READ, WRITE, THINK, DISCUSS AND CONNECT

Miss Nelson Is Back

Miss Nelson Is Missing

Harry Allard

The trade book edition of the novel used to prepare this guide is found in the Novel Units catalog and on the Novel Units website. Using other editions may have varied page references.

Please note: We have assigned Interest Levels based on our knowledge of the themes and ideas of the books included in the Novel Units sets, however, please assess the appropriateness of this novel or trade book for the age level and maturity of your students prior to reading with them. You know your students best!

ISBN 9781502040008

Copyright infringement is a violation of Federal Law.

© 2020 by Novel Units, Inc., St. Louis, MO. All rights reserved. No part of this publication may be reproduced, translated, stored in a retrieval system, or transmitted in any way or by any means (electronic, mechanical, photocopying, recording, or otherwise) without prior written permission from Novel Units, Inc.

Reproduction of any part of this publication for an entire school or for a school system, by for-profit institutions and tutoring centers, or for commercial sale is strictly prohibited.

Novel Units is a registered trademark of Conn Education.

Printed in the United States of America.

To order, contact your
local school supply store, or:

Toll-Free Fax: 877.716.7272

Phone: 888.650.4224

3901 Union Blvd., Suite 155

St. Louis, MO 63115

sales@novelunits.com

novelunits.com

Table of Contents Miss Nelson Is Missing

Summary	3
Initiating Activities	3
Section-by-Section	8
Sections contain: Story Map, Character Webs, Discussion Questions and Activities, Graphic Organizers, Key Vocabulary, Supplementary Activities	
Mystery Activities	14
Drama Activities	14
Vocabulary Activities	16

Miss Nelson Is Back

Initiating Activities	18
Section-by-Section	18
Sections contain: Vocabulary, Discussion Questions, Supplementary Activities	
Post-reading Activities	20
Assessment for Both Books	25

Skills and Strategies

Thinking

Brainstorming, comparing
and contrasting, evaluating,
details

Literary Elements

Plot, setting, character

Vocabulary

Synonyms/antonyms,
context clues

Comprehension

Predicting, sequencing,
cause/effect, inference

Writing

Newspaper story, lists

Listening/Speaking

Participation in discussion,
participation in dramatic
activities

Activity Sheet

mystery movies

something is stolen

need a detective

someone is missing

hard to solve

Sherlock Holmes

look for clues



Pages 16-25

Vocabulary

detective	wicked
gobbled	exclaimed
swarm	assigned

Discussion Questions and Activities

1. Discuss what police do. Use a web activity. The teacher will write the class suggestions on a large sheet of paper which will be displayed.
2. Why won't Detective McSmogg be much help to the children?
3. There are clues on pages 18-19. Where do you think Miss Nelson is? Why would Miss Nelson's shades be down?
4. Why was Miss Swamp near Miss Nelson's house?
5. Did the kids from Miss Nelson's class find the clues? Prove your answer.
6. Why doesn't it seem likely that Miss Nelson was gobbled up by a shark? Were there any clues to this?
7. What is Mars? Where is it? Could Miss Nelson get there? Is there anything on Mars? Show students a map or model of the solar system. Discuss satellites. There are no people on Mars and nobody has ever been there. Mars is 35,000,000 miles from Earth. How long do you think it would take to fly to Mars?
8. Could butterflies carry a car away? Where else should the class search for Miss Nelson?

Pages 26-32

Vocabulary

discourage	certainly
------------	-----------

Discussion Questions and Activities

1. Why were the kids discouraged?
2. Were the footsteps in the hall the witch? Who had the sweet voice?
3. How do the students feel? Prove it. (pp. 28-29)
4. Do the students know what happened to Miss Nelson?
5. What are the clues on pages 30-31 that a detective would use to find out what happened to Miss Nelson? Which clues are visual?
6. Why did the author include page 32? Do you know what happened to Miss Viola Swamp?
7. Complete the Mystery Story Map on page 9. Include all of the clues from the story.

School House Game

Cut out the vocabulary words from pages 23 and 24 and place face down on the table. Take turns drawing a vocabulary word. When a child draws a word and pronounces it correctly, he/she may move ahead one space. If he/she can give the meaning of the word, the child may move ahead two additional spaces. The first child to reach the finish square is the winner.

