

LEAD-INS TO LITERATURE



# Lord of the Flies

by William Golding



PRESTWICK HOUSE, INC.





# Lord of the Flies

by William Golding


## Table of Contents

### PART ONE

■ Socio-Historical Context of the Novel	5
■ Literary Influences	19

### PART TWO

■ Plot	29
■ Allegory and Symbols	36
■ Characterization	67
■ Theme	74

 <u>Biography</u>	82
<u>End Notes</u>	87





# Lord of the Flies

by William Golding



## PART ONE

■ Socio-Political Context	5
■ Literary Influences	19







## Lord of the Flies

by William Golding



As World War II drew to a close, the simmering hostility between the Soviet Union and the West, especially the United States, began to intensify.







# Lord of the Flies

by William Golding



The tension between the Soviet Union and the United States increased and quickly escalated into a crisis in 1948 when the Soviets blockaded land access to West Berlin, thus threatening Germans there with starvation.

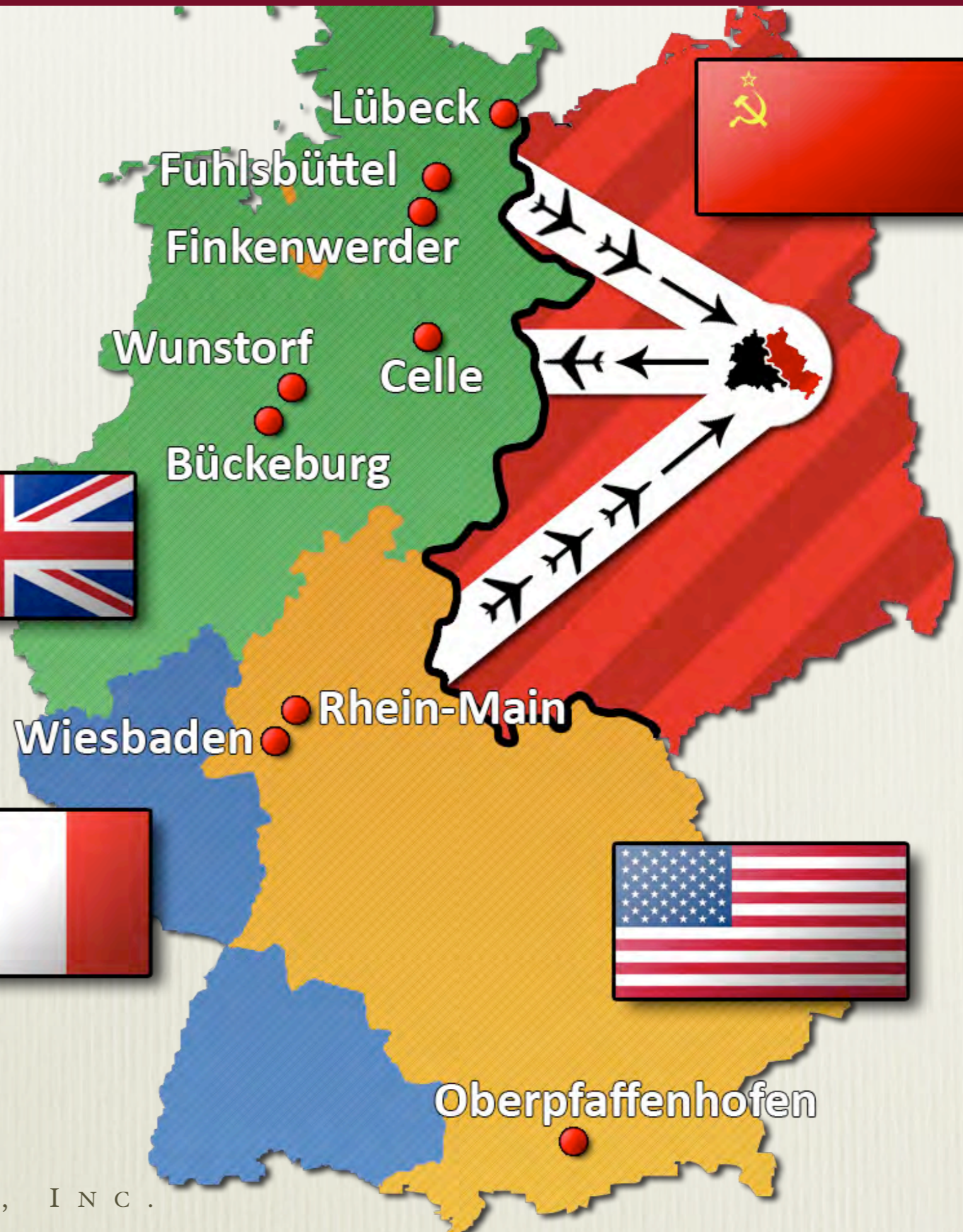






# Lord of the Flies

by William Golding



The West responded by supplying food and fuel to the blockaded areas, in what was called the Berlin Airlift (June 24, 1948-May 11, 1949).

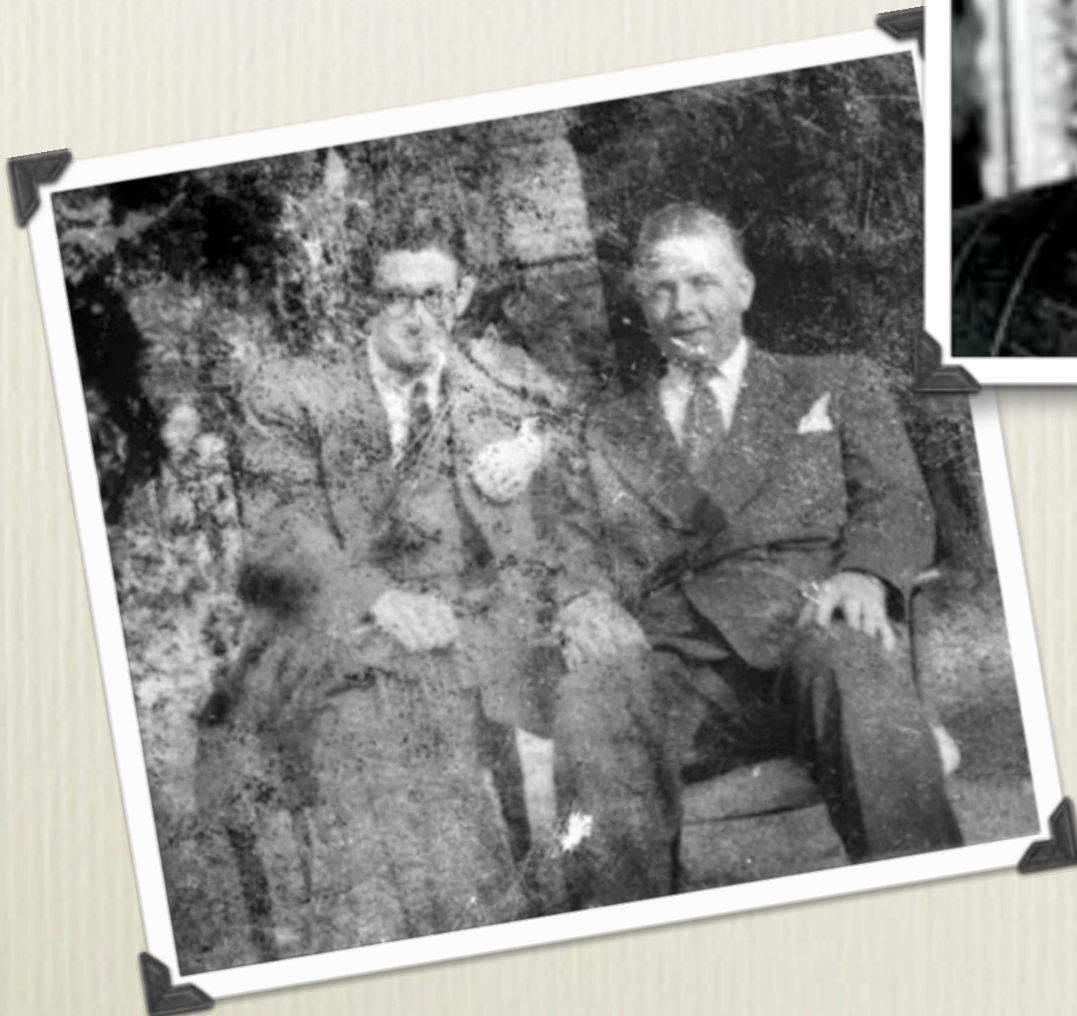




# Lord of the Flies

by William Golding

The fears of the citizens of Britain and the U.S. increased with the 1949 disclosure that two British nationals with access to British and American secrets had been spying for the Soviet Union for years.



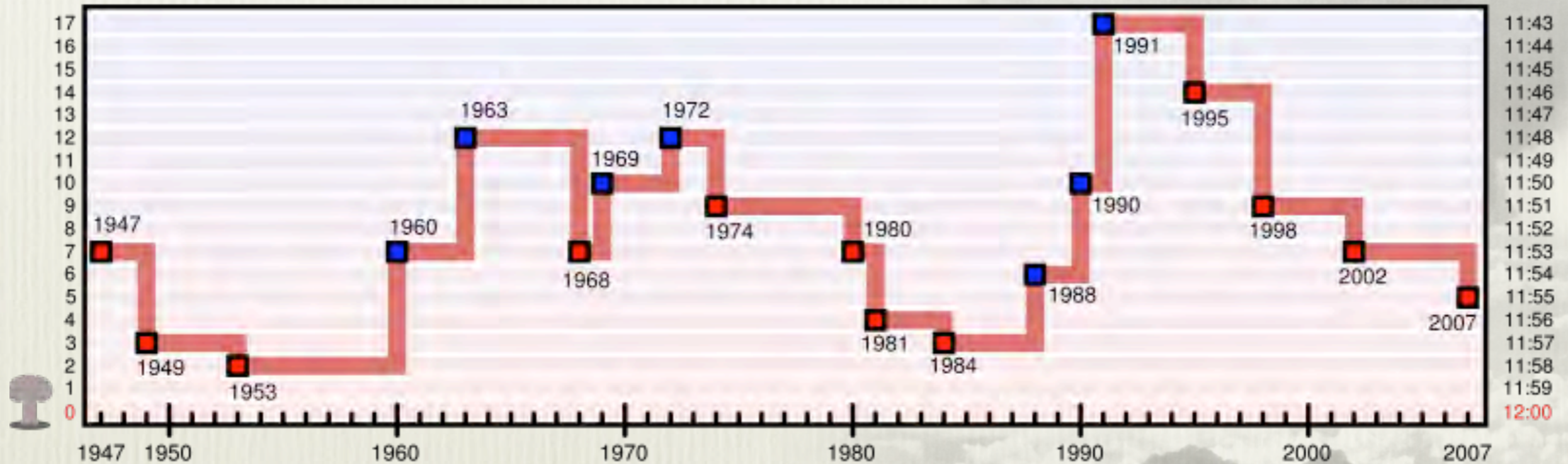




# Lord of the Flies

by William Golding

## Doomsday Clock: Minutes to Midnight, 1947-2007



In 1947, scientists at the University of Chicago designed an image called the “Doomsday Clock” for a scientific journal. It symbolically represented how close to Atomic warfare the world was. The clock was set at 11:53 p.m. Midnight indicated the end of the world.

Throughout the Cold War, the scientists moved the time on the clock toward or away from midnight. After the Soviets detonated their first atomic bomb in 1949, the Doomsday Clock was set at 3 minutes to midnight.